

Laser Data Collection Example Project **Heat Exchanger Nozzle Verification**

Project Scope

The client has a heat exchanger that was scheduled for replacement. Prior to fabricating a new exchanger, the existing nozzle locations must be verified. The client wants to reuse the attached piping connected to the existing one.

The measurements gathered in the survey will be compared against the original fabrication drawings used to build the old exchanger. The two values will be compared with the newly surveyed values will be those the fabricator will use for the replacement unit.



Figure 1: Photograph of heat exchanger to be replaced

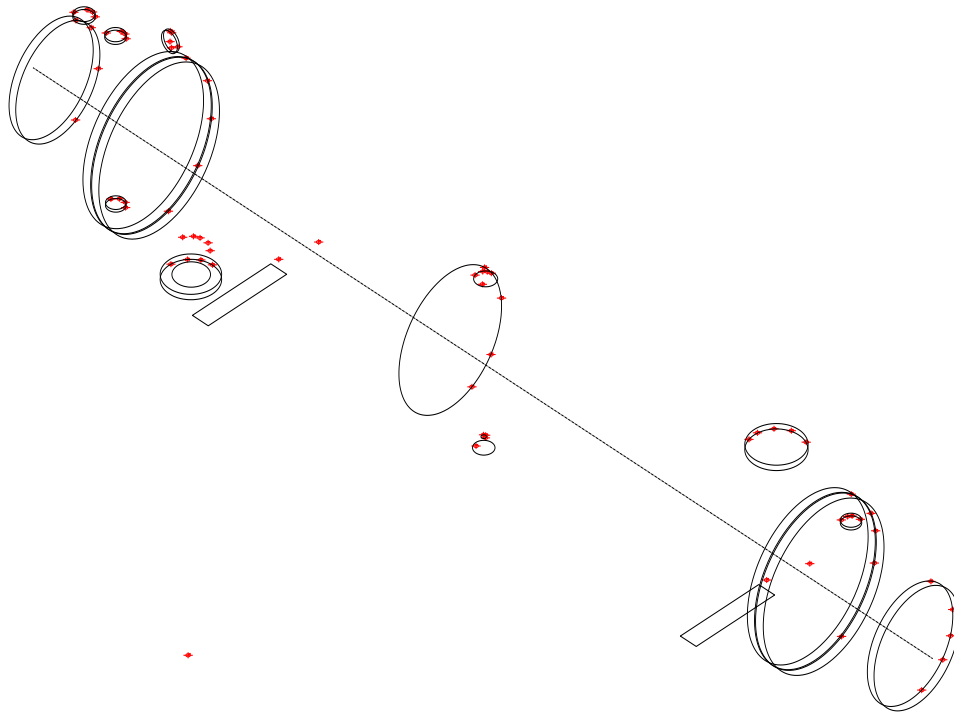


Figure 2: Measurements taken using a total station are imported into AutoCAD as individual 3D coordinates representing the nozzles, heads, and baseplates

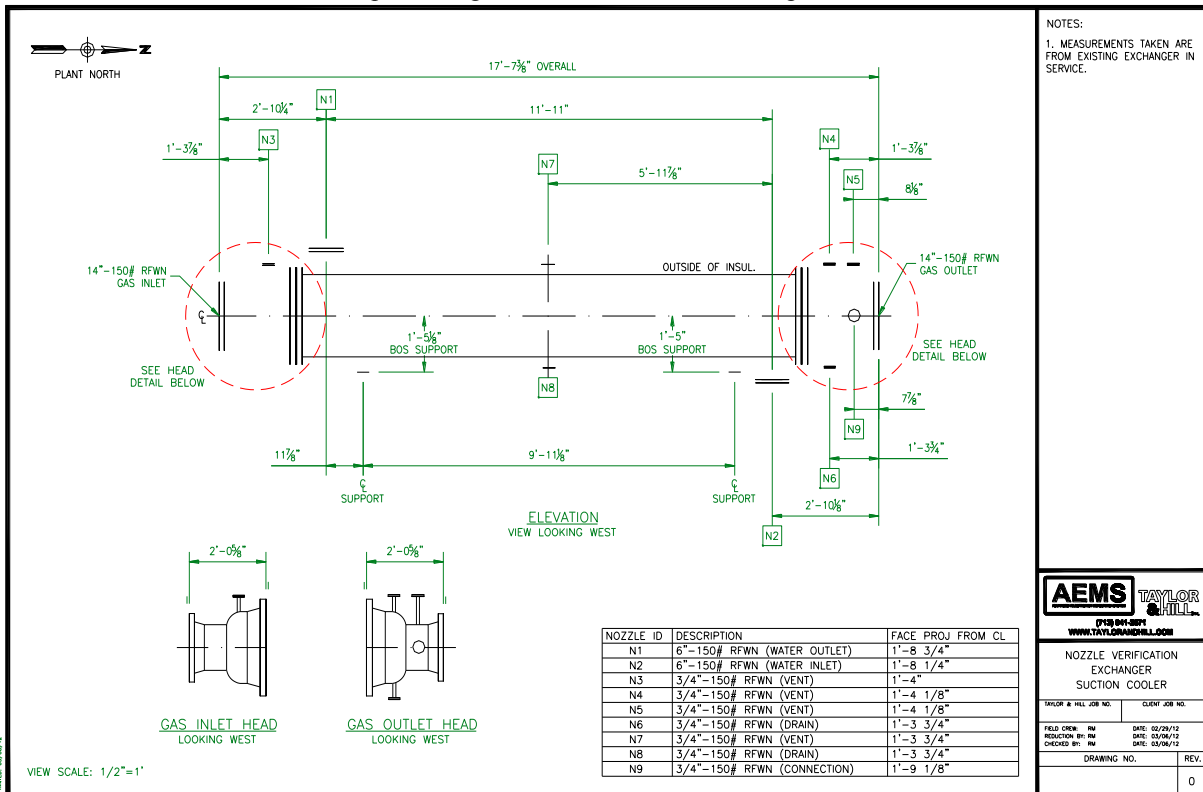


Figure 3: Final CAD drawing delivered to the client showing nozzle locations and sizes