

Laser Data Collection Project

Scanning of Process Units for As-built Conditions

Project Scope

An engineering/construction firm needed to capture a large amount of measurements in a relatively short time frame. Instead of walk-downs and manual field sketches, laser scanning was requested.

The resulting point cloud database would be used to route and check for interferences of new piping that was to be routed throughout the unit for a project involving the addition of new furnaces.

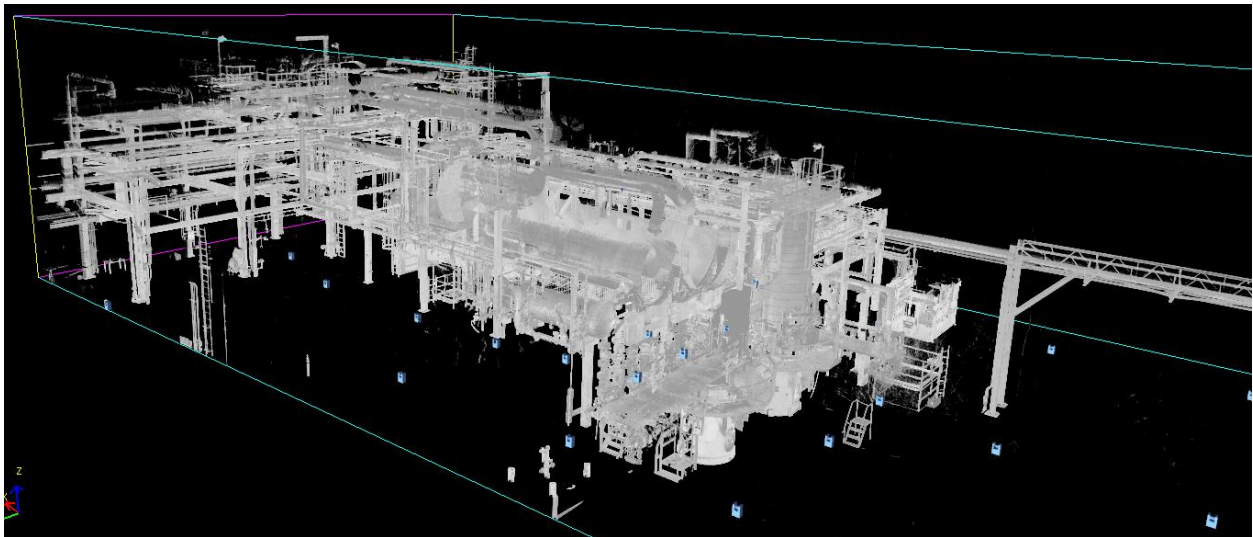


Figure 1: Isometric view of portion of a process unit that was laser scanned
(The small blue boxes near the ground represent a scan setup position, approx. 40 scans)



Figure 2: Elevation view of the same area

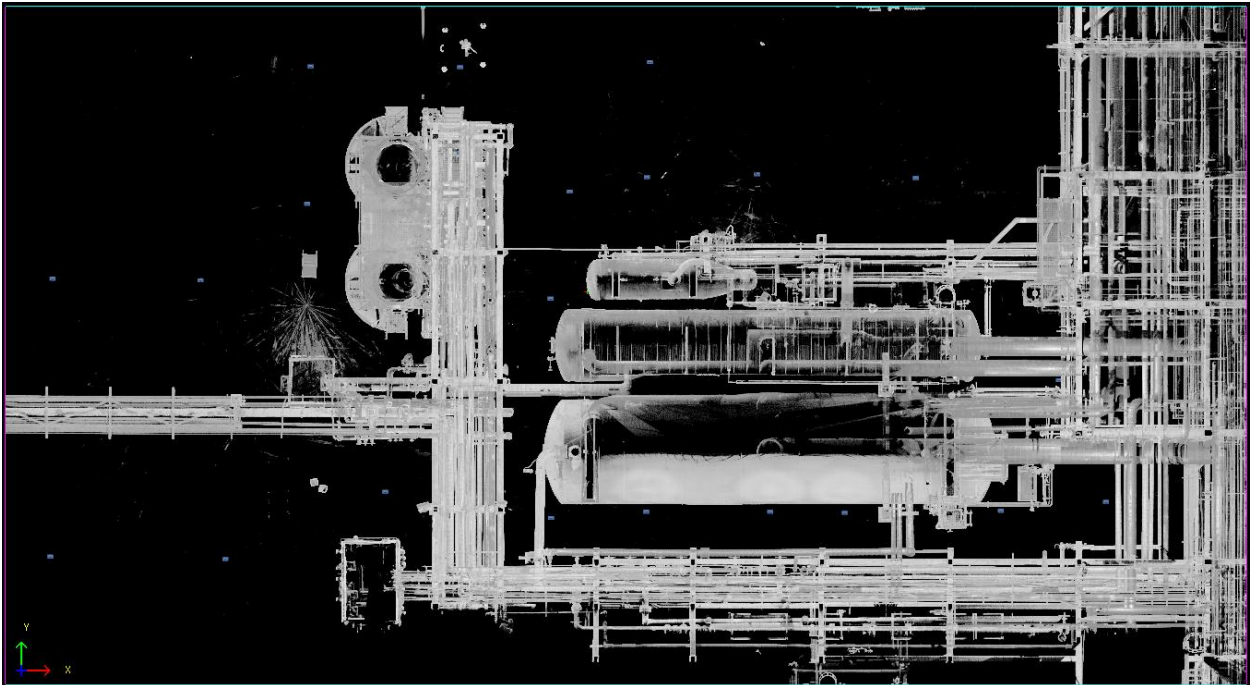


Figure 3: Plan view looking down on the area